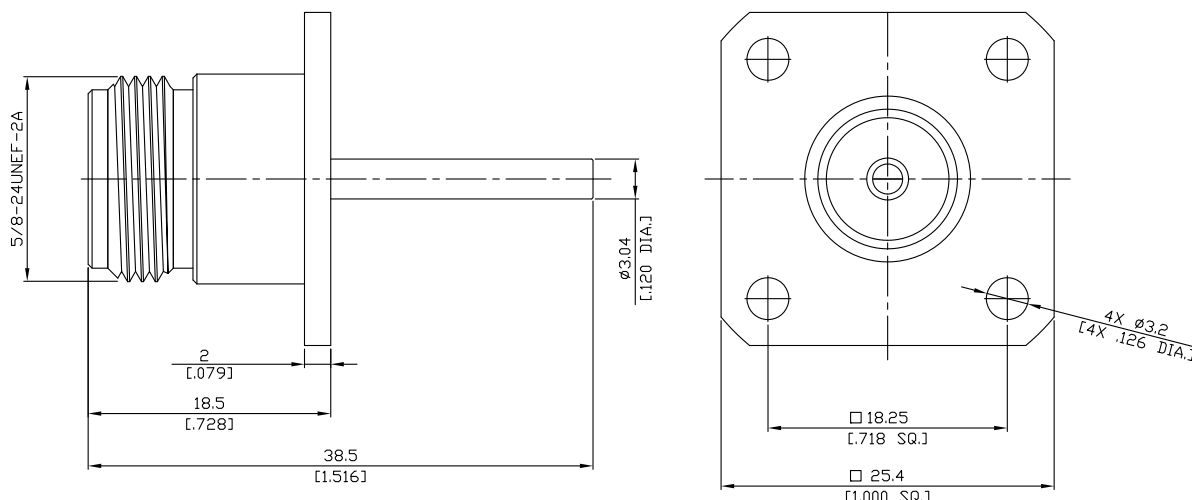


N Jack (Female) Connector Solder Attachment 4 Hole Flange Mount
Stub Terminal, 18.25mm (.719 inch) Hole Spacing DC-11GHz VSWR1.20

N2GFA50-3850A / H4



All dimensions are in mm [inch]

Tolerances according to DIN ISO 2768-mH

Interface

According to

IEC 61169-16; MIL-STD-348B/304

Electrical Data

Impedance	50 Ω
Frequency	DC to 11 GHz
VSWR (Return Loss)	≤ 1.20 (≥ 20.83 dB)
Insertion Loss	≤ 0.1 x √F (GHz) dB
Insulation Resistance	≥ 5 GΩ
Center Contact Resistance	≤ 1 mΩ
Outer Contact Resistance	≤ 0.25 mΩ
Working Voltage (at sea level)	500 V rms
Power handling	1 GHz: 1000 W; 2 GHz: 700 W ; 8 GHz: 300 W

Material And Plating

Piece Parts	Material	Plating
Centre contact	Phosphor Bronze	Gold plating, 3 pinch (Non-magnetic nickel-phosphorus underplating, 80 pinch)
Body	Brass	Copper-Tin-Zinc Alloy
Insulator	PTFE	

N Jack (Female) Connector Solder Attachment 4 Hole Flange Mount
Stub Terminal, 18.25mm (.719 inch) Hole Spacing DC-11GHz VSWR1.20

N2GFA50-3850A / H4

Mechanical Data

Coupling mechanisms	Screw-lock
Mating Cycles	≥ 500
Centre Contact	Soldered
Terminal Type	Stub
Captivated Type	Mechanical
Coupling Test Torque	1.7 Nm max.
Recommended Torque	0.7 Nm to 1.1 Nm

Environmental Data

Temperature Range	-55°C to +155°C
Thermal shock	MIL-STD-202, Meth. 107, Cond. B
Corrosion	MIL-STD-202, Meth. 101, Cond. B
Vibration	MIL-STD-202, Meth. 204, Cond.D
Shock	MIL-STD-202, Meth. 213, Cond. I
Moisture Resistance	MIL-STD-202, Meth. 106
RoHS	compliant

Packing

Single or 100